

HD-SDI DVR

HH-5100 Series

Full HD Real-Time Hybrid(HD-SDI/960H) DVR



- **ezP2P™** Cloud Service without any complicated network setting
- **ezLink™** for Instant Live Monitoring with Mac Address Input
- **Universal Hybrid** DVR(HH-5108/5116DX)
 - Automatic Perception of CIF/D1/960H/HD-SDI(720P/1080P)
- 2 x Typical **PUSH Functions**
 - PUSH Video Call to iPhone/iPad & Android Phone
 - PUSH Network Connection under Sensor Event
- **POS Function** up to 4 sets of POS Devices
- Remote Monitoring by Remote S/W(CMS) & Smart Phone



[HH-5104/8CX]



[HH-5116DX]

MODEL		HH-5104CX (4 Ch)	HH-5108CX (8 Ch)	HH-5116DX (16 Ch)
Compression Algorithm		Video : H.264, Audio : ADPCM		
Max. HDD Bay		4 x SATA HDD (2 x SATA HDD & 1 x DVD)		5 x SATA HDD (4 x SATA HDD & 1 x DVD)
Operating System		Embedded Linux		
Video	Input	4 Ch	8 Ch	16 Ch
	Format	HD-SDI(720P/1080P)	CIF/D1/960H/HD-SDI(720P/1080P)	
	Loop-Out	Not Available		
Video Mode		Digital		
Live Display (NTSC/ PAL)		120/100 fps	240/200 fps	480/400 fps
Screen Modes for Live Display		1 & 4	1, 4 & 9	1, 4, 9 & 16
Video-Out	Monitor	VGA & HDMI	VGA & HDMI & Analog Spot	
	Resolution	HDMI: 800x600, 1024x768, 1280x1024, 1920x1080 (Selectable)		
Recording Speed (NTSC/PAL)	352x240/288(CIF)	-	240/200 fps	480/400 fps
	720x240/288(2CIF)	-	240/200 fps	480/400 fps
	720x480/576(D1)	-	240/200 fps	480/400 fps
	960x480/576(960H)	-	240/200 fps	480/400 fps
	1280x720(720P)	120 fps	240 fps	480 fps
Recording Resolution	1920x1080(1080P)	120 fps	240 fps	480 fps
	Digital	-	352x240/288, 720x240/288, 720x480/576, 960x480/576	
Recording Modes		1280 x 720, 1920 x 1080		
Playback & Search		Continuous, Scheduled, Sensor-Activated & Motion Detection Recording Pre & Post Alarm Recording, Emergency Recording, Quick Backup		
Speed	Ch & Resolution	x1, x2, x4, x8, x16, x32 1, 4, 9 & 16 Ch at 1080P		
	Function	Intelli-Search by Time Bar, Calendar (Date & Time) and Event Search		
Audio Input / Output		4 Ch / 1 Ch	8 Ch / 1 Ch	16 Ch / 1 Ch
Alarm Input / Relay Output		4 Ch / 1 Ch	8 Ch / 4 Ch	16 Ch / 4 Ch
P/T/Z Control (RS-485)		Virtual Joy-Stick Control on screen by Mouse Pan/Tilt/Zoom/Focus/Iris by Keyboard		
LAN		Gigabit Ethernet (RJ45) Fixed IP, DHCP & DDNS		
Network Function		1) Dual-Stream (Local Recording & Network Transmission) 2) Network Bandwidth Control (25 Kbps ~ 1000 Mbps) 3) Live Monitoring, Remote Playback and File Backup (Triplex-on-Remote) 4) Time Synchronization by NTP Server ("pool.ntp.org") 5) Remote & E-Mail Notification, Remote System Reboot by IE, Remote PTZ Control 6) P2P Cloud Service (Auto Port forwarding)		
Remote Management	Software	CMS & MMS (SmartViewerPro or MobileViewerPro)		
	Web (IE)	Live Monitoring, Playback & System Configuration		
Backup Device	Internal	DVD Burner (Option)		
	External	Local Backup by USB ODD, Network Backup by CMS, File Upload to FTP Server		
System Recovery after Power Failure		Auto-Reboot and Journaling File System		
Advanced Functions		1) Firmware Upgrade by USB & CMS over Network 2) Import & Export of Setting Value, Water-Mark, AVI File Backup 3) Quick Setup to designate Recording Period 4) HDD SMART Info (Model, Capacity, Bad Sector, Temperature, Used Period) 5) Warning Alarm for System Over-Temperature 6) Help Message for easy setup & Multi-Language support 7) Digital Zoom for both Live & VOD mode		
POS		Text-in Based (RS232, USB to Serial support, TCP/IP Network) / Display POS Data on Live & Playback		
e-SATA		Local Storage Extension through e-SATA Port (Default on Board)		
System Operation		Front Button, IR Remote Controller, USB Mouse, Keyboard (Option)		
Power		12V x 5A D/C		12V x 7A D/C
Operating Temperature and Humidity		5~40 °C / 20~90% RH		
Dimension (WxDxH)		360 x 380 x 66 (mm)		420 x 428 x 88 (mm)
Certification		CE & FCC & KCC & WEEE, RoHS		

(* Specification is subject to change without prior notice.

ezP2P™ Cloud Service (www.ezp2p.com)

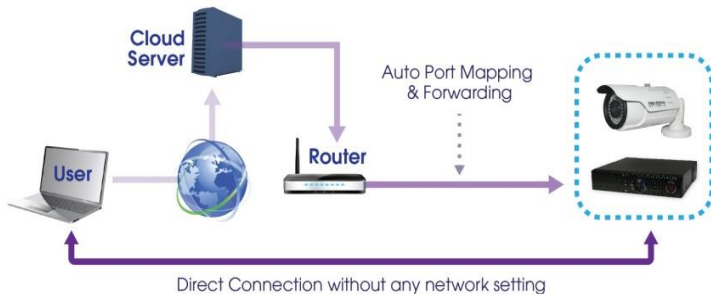
ezP2P™ Cloud Service is a cloud-based video management system without any complicated network setting. Just login to ezP2P™ Cloud Server (www.ezp2p.com) with your own account and enjoy thumbnail preview and instant live monitoring.



[Main Page]



[Preview]



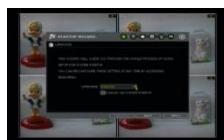
ezLink™ with Mac Address

The easiest way to connect to the DVR just by Mac Address.



Startup Wizard

Startup Wizard will guide you through the whole process of system startup. You can setup major DVR Configuration by just following the steps which Wizard guides and also can reconfigure these setting at any time by accessing to main menu.



[Language]



[Date/Time]



[Record]



[HDD]

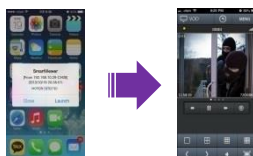


[Network]

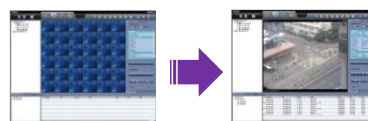
Typical PUSH Function

2 PUSH Functions below provides you with efficient monitoring and control of your DVR. It allows you to be free from constant attention to the event that may or may not happen.

PUSH Video Call
to iPhone & Android Phone



PUSH Network
Connection under Sensor Event



Integrated Network Solution

Guarantee unlimited scalability and seamless integration of all FOCUS products such as DVR, NVR & IP Camera over unique network.



[CMS]



[SmartViewerPro / MobileViewerPro]